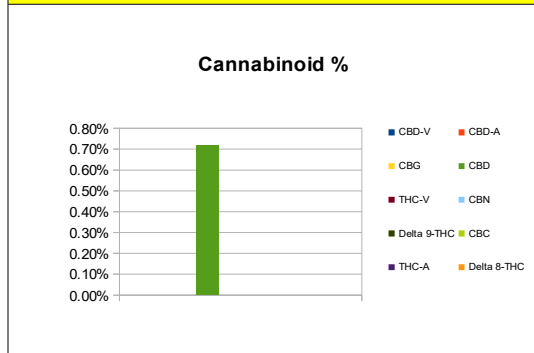
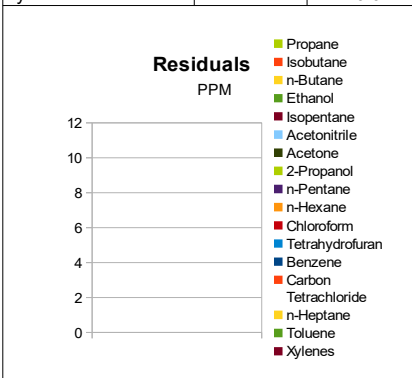


Sample Information		
Sample Identification	EDO 15mg Gummy	
Laboratory Number	2018007888	
Batch Number	N/A	
Matrix	Medible	
Analyzed Date	06/13/18	
Extraction Date	06/13/18	
Cannabinoid (HPLC)	%	mg/g
Compound		
CBD-V	0.00%	0.00
CBD-A	0.00%	0.00
CBG	0.00%	0.00
CBD	0.72%	7.17
THC-V	0.00%	0.00
CBN	0.00%	0.00
Delta 9-THC	0.00%	0.00
CBC	0.00%	0.00
THC-A	0.00%	0.00
Delta 8-THC	0.00%	0.00
Cannabinoids Total		
Max Active THC	0.00%	0.00
Max Active CBD	0.72%	7.17
T. Active Cannabinoids	0.72%	7.17
Total Cannabinoids	0.72%	7.17

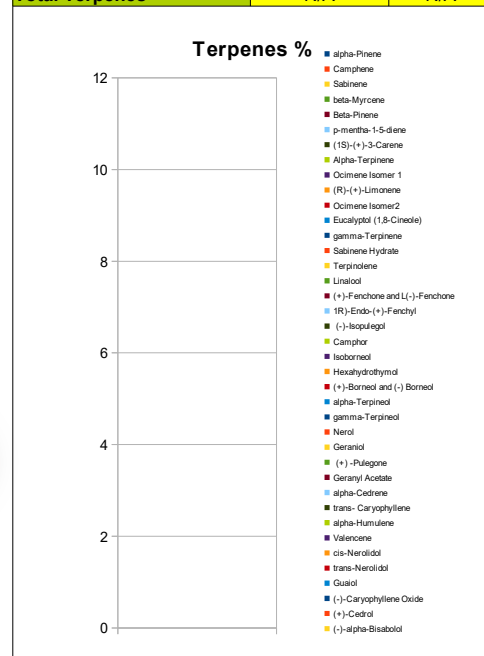
Max Active Ratios		
N/A :1 CBD to THC		
0.0 :1 THC to CBD		




RS (GCMS-HS)	PPM	RL
Compound		
Propane	NT	5.0
Isobutane	NT	5.0
n-Butane	NT	5.0
Ethanol	NT	5.0
Isopentane	NT	5.0
Acetonitrile	NT	5.0
Acetone	NT	50.0
2-Propanol	NT	5.0
n-Pentane	NT	5.0
n-Hexane	NT	5.0
Chloroform	NT	5.0
Tetrahydrofuran	NT	5.0
Benzene	NT	5.0
Carbon Tetrachloride	NT	5.0
n-Heptane	NT	5.0
Toluene	NT	5.0
Xylenes	NT	10.0



Terpene (GC-MS)	%	mg/g
Compound		
alpha-Pinene	NT	NT
Camphene	NT	NT
Sabinene	NT	NT
beta-Myrcene	NT	NT
Beta-Pinene	NT	NT
p-mentha-1-5-diene	NT	NT
(1S)-(+)-3-Carene	NT	NT
Alpha-Terpinene	NT	NT
Ocimene Isomer 1	NT	NT
(R)-(+)-Limonene	NT	NT
Ocimene Isomer2	NT	NT
Eucalyptol (1,8-Cineole)	NT	NT
gamma-Terpinene	NT	NT
Sabinene Hydrate	NT	NT
Terpinolene	NT	NT
Linalool	NT	NT
(+)-Fenchone and L(-)-Fenchone	NT	NT
1R)-Endo-(+)-Fenchyl	NT	NT
(-)-Isopulegol	NT	NT
Camphor	NT	NT
Isoborneol	NT	NT
Hexahydrothymol	NT	NT
(+)-Borneol and (-) Borneol	NT	NT
alpha-Terpineol	NT	NT
gamma-Terpineol	NT	NT
Nerol	NT	NT
Geraniol	NT	NT
(+) -Pulegone	NT	NT
Geranyl Acetate	NT	NT
alpha-Cedrene	NT	NT
trans- Caryophyllene	NT	NT
alpha-Humulene	NT	NT
Valencene	NT	NT
cis-Nerolidol	NT	NT
trans-Nerolidol	NT	NT
Guaiol	NT	NT
(-)-Caryophyllene Oxide	NT	NT
(+)-Cedrol	NT	NT
(-)-alpha-Bisabolol	NT	NT
<b>Total Terpenes</b>	N/A	N/A



Sample Image	
	
Micro Visual:	NOT TESTED
Percent Moisture	NOT TESTED

g/medible
2.74
mg THC/medible
0
mg CBD/medible
19.63
(mg) total cannabinoids/medible
19.63

Metals	PPM	RL
Compound		
Lead	NT	0.010
Arsenic	NT	0.010
Cadmium	NT	0.010
Mercury	NT	0.001



RL=Reporting Limit  
NA=Not Applicable  
NT=Not Tested

Chemist: JW  
Report Expires: 09/13/18